

Optimizing VDI Workloads with Virtana Infrastructure Performance Management (IPM)

Essentials

Optimize VDI Environments with Virtana IPM:

- Scale-out VDI workloads effectively
- Real-time & historical performance visibility throughout the entire stack
- Forecast and manage capacity utilization across the entire stack to ensure there are resources available to support VDI at scale

Assure the performance and availability of mission-critical VDI environments through:

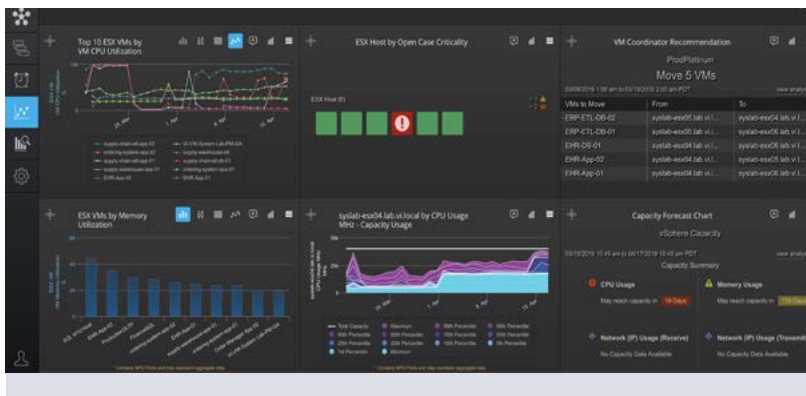
- A single pane of glass across shared infrastructure
- Automatic discovery, mapping, and monitoring of VDI environment infrastructure compute, network and storage
- Manage access to resources based on application mission criticality and service levels
- Out-the-box automatically applied best practices dashboards, reports and alarms
- Recommendations for best new workload deployment locations and existing workload right-sizing
- Automated Investigations dramatically reduce mean time to resolution (MTTR) of tough performance issues

Optimizing Virtual Desktop Infrastructure Performance

Virtana IPM leads the industry in assuring mission-critical infrastructure and storage performance with a unique app-centric approach that ensures deep insights into application performance, consumption, and overall service levels. These capabilities are extended to VDI environments ensuring they can perform at scale.

With organizations increasingly relying on Virtual Desktop environments to support their remote users, Virtana IPM provides critical insights into key underlying infrastructure components typical of VDI, including:

- Virtual Servers
- Shared Storage (SAN or HCI) to support the VDI environment
- Network Attached Storage for home and department shares
- Network connections from the VDI guests to multiple sources, including business-critical applications inside the environment
- Business-critical applications running on shared storage (SAN, HCI, or NAS) or in the cloud.



Virtana IPM is unique in its ability to map, monitor, and analyze the VDI workloads that underpin the digital transformation of your desktop environments, and to do so at virtually unlimited scale.

Single-pane-of-glass for Your Hybrid Infrastructure

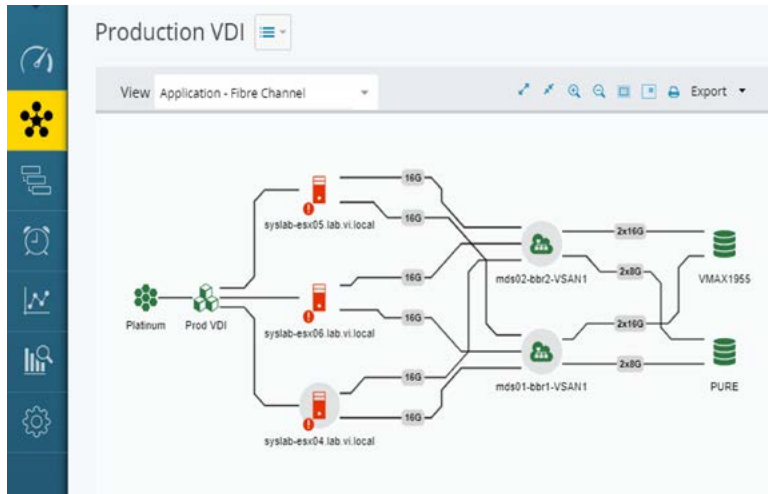
Virtana IPM starts by mapping infrastructure to the VDI applications consuming its resources. This comprehensive understanding of the data supply chain provides the basis for rich dashboards that deliver visibility and control to administrators, architects, and executives.

Assure Performance: Virtana IPM monitors hundreds of machine and wire metrics in real-time at virtually unlimited scale over complex heterogeneous environments. It then combines this best-in-class data with dynamic, best practice, and custom alarms to assure performance and availability, and leverages best-practice AIOps AI, machine learning and statistical methods for problem resolution, as well as workload sizing and placement.

Forecast and Proactively Manage Capacity: Correlate short and long-term consumption trends and be warned proactively of potential capacity issues, whether at the client, VM host, network, or storage.

Solve Problems Fast: Automatically triage, diagnose, and provide actionable resolution recommendations before your operations teams are even aware of potential impacts on critical applications like VDI.

Virtana IPM for Virtual Desktop Workloads



- Automatically maps VDI to infrastructure components
- Monitors VDI KPIs (Internal & External)
- Visibility, scale, and analytics needed to proactively assure the performance, availability, capacity, and efficiency of VDI applications.

Virtana IPM provides full-stack end-to-end visibility into VDI environments, and protocol flows as well as the network and storage consuming those resources. The result is comprehensive visibility and the unparalleled correlation that makes identification and root cause analysis easy, even for challenging issues. Virtana IPM assures the performance, availability, capacity, and efficiency of VDI regardless of configuration or protocol.

Virtana IPM was built from the ground up as a machine-learning powered analytics platform that goes well beyond the capabilities of traditional AIOps platforms to assure, manage, balance workloads across virtual desktop infrastructure.

Virtana IPM provides flexible licensing, out-of-the-box best practices, and easy deployment that provides visibility and control in minutes, not days.

VDI and Virtana IPM:

- Understand, correct and prevent application performance problems due to noisy neighbors, or resource hogs
- Proactively manage performance sensitive workload and storage capacity at industry-leading scale
- Make it easy to automate triage and diagnose the toughest performance issues

Take the next step

See a demo today of the Virtana IPM solution for Virtual Desktop Infrastructure <https://www.virtana.com/request-demo/>